



Scouting Lafayette

Recent Commercial Transactions

Our team works diligently each month to put together an index listing commercial real estate transactions at or around \$500,000 in the Lafayette Parish market.

We love being able to provide this as a free service to our community!

Check out the latest transactions below.

April 11th - April 30th, 2025

**SALE TYPE/AMOUNT**

CASH SALE, \$ 2,700,000

SELLER/GRANTOR

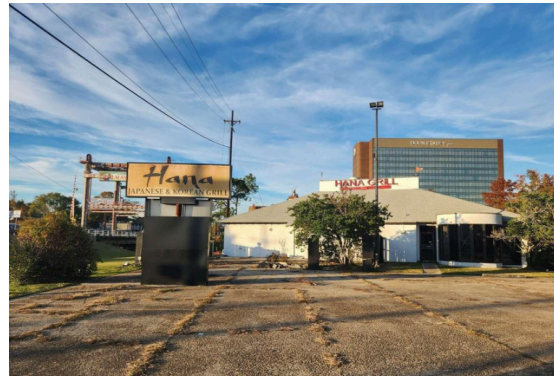
AC OF LAFAYETTE LLC
REP BY CHARLES F. HOHORST III

BUYER/GRANTEE

ACADIANA COLD STORAGE LLC
REP BY JASON GUIDRY

SIZE, ADDRESS & TYPE

3.373 ACRES
2300 BLK CAMERON ST
COMMERCIAL BUILDING

**SALE TYPE/AMOUNT**

CASH SALE, \$ 825,000

SELLER/GRANTOR

S7 HOLDING COMPANY LLC
REP BY GEORGE RIMMER COVINGTON JR.

BUYER/GRANTEE

FOREMAN BROTHERS PROPERTIES LLC
REP BY DAVID JONATHAN FOREMAN

SIZE, ADDRESS & TYPE

0.96 ACRES
1601 W PINHOOK RD
COMMERCIAL BUILDING



SALE TYPE/AMOUNT
CASH SALE, \$ 523,000

SELLER/GRANTOR
HANSBURY ADULT DAY HEALTH CARE OF
LAFAYETTE LLC, REP BY ANTHONY
HANSBURY

BUYER/GRANTEE
SOUTHERN MAGNOLIA REAL ESTATE LLC
REP BY JEANNE CLOTHIER

SIZE, ADDRESS & TYPE
0.78 ACRES
2121 DULLES RD
COMMERCIAL BUILDING



SALE TYPE/AMOUNT
CASH SALE, \$ 500,000

SELLER/GRANTOR
GARBER INDUSTRIAL PARK LLC
REP BY FRANK GARBER

BUYER/GRANTEE
3735 90 LLC
REP BY GREG GACHASSIN

SIZE, ADDRESS & TYPE
5+/- ACRES
206,208 DAIRY LANE - CARENCRO
VACANT LAND



SALE TYPE/AMOUNT
CASH SALE, \$ 687,500

SELLER/GRANTOR
TAU SOUTH LLC
REP BY JANEEN F. DRAKULICH

BUYER/GRANTEE
MDT PROPERTIES LLC
REP BY MATTHEW TYL

SIZE, ADDRESS & TYPE
0.55 ACRES
100 INEZ LANE
COMMERCIAL BUILDING

Please note: Original documents are always best. This is a summary of information provided by legal documents filed in Lafayette Parish.
Scout Real Estate Co. is not responsible for any mistakes in our summation.

Featured Listing



Prime Retail Location in Sugar Mill Pond!

This highly visible corner suite offers excellent signage opportunities and is ideal for a retail or professional office user. Situated in Sugar Mill Pond—the largest master-planned community in Lafayette Parish—this location is one of the few remaining sites fronting Chemin Metairie Parkway in Youngsville, near the East Milton (Highway 92) corridor, the city's primary commercial hub.

The suite is part of Mill Commons, an open-air lifestyle shopping center that, upon full build-out, will feature nine commercial buildings. Current and future tenants include restaurants, office spaces, a hair salon, spa, and a women's boutique, creating a vibrant and diverse business environment.

For more information, contact Rex Moroux or Jeff Landry to schedule a showing, or visit our website to learn more.

337-443-0880

1921 Chemin Metairie Pkwy, Youngsville, LA 70592



Downtown Alive - May 2nd, 2025!

Kick off the season in style with *Downtown Alive!*—Lafayette’s favorite free concert series—returning on **Friday, May 2nd, 2025**, with a high-energy performance from **Nik Parr and the Selfless Lovers!**

Join Downtown Lafayette from **6:00 PM to 8:30 PM** for an evening of great music, good company, and vibrant community spirit. Whether you're dancing in the streets or enjoying a bite from one of the local food vendors, it's the perfect way to welcome the warmer months and keep the festival spirit alive.

This event is **free and open to the public**, so bring your friends, family, lawn chairs—or just your dancing shoes—and come be part of a beloved Lafayette tradition. For a full schedule of Downtown Alive! performances and more exciting events coming up this summer, visit

[Downtown Lafayette's website](#).



We keep you up-to-date on what's hitting the market and being sold in Acadiana...and our friends over at Developing Lafayette will tell you what's happening with those properties!

A new car wash or Mexican restaurant headed our way?

They'll be the first to let you know!

Click the logo to head to their site.

About Us

Located Downtown Lafayette, LA and led by Jeff Landry and Rex Moroux, Scout Real Estate is a full-service commercial real estate, brokerage, property management and consulting firm based on honesty, integrity, and a rock-solid work ethic.



Contact Us

617 S Buchanan St
Lafayette LA 70501

337.443.0880
scoutrec.com
jeff@scoutrec.com

No longer want to receive these emails? [Unsubscribe.](#)